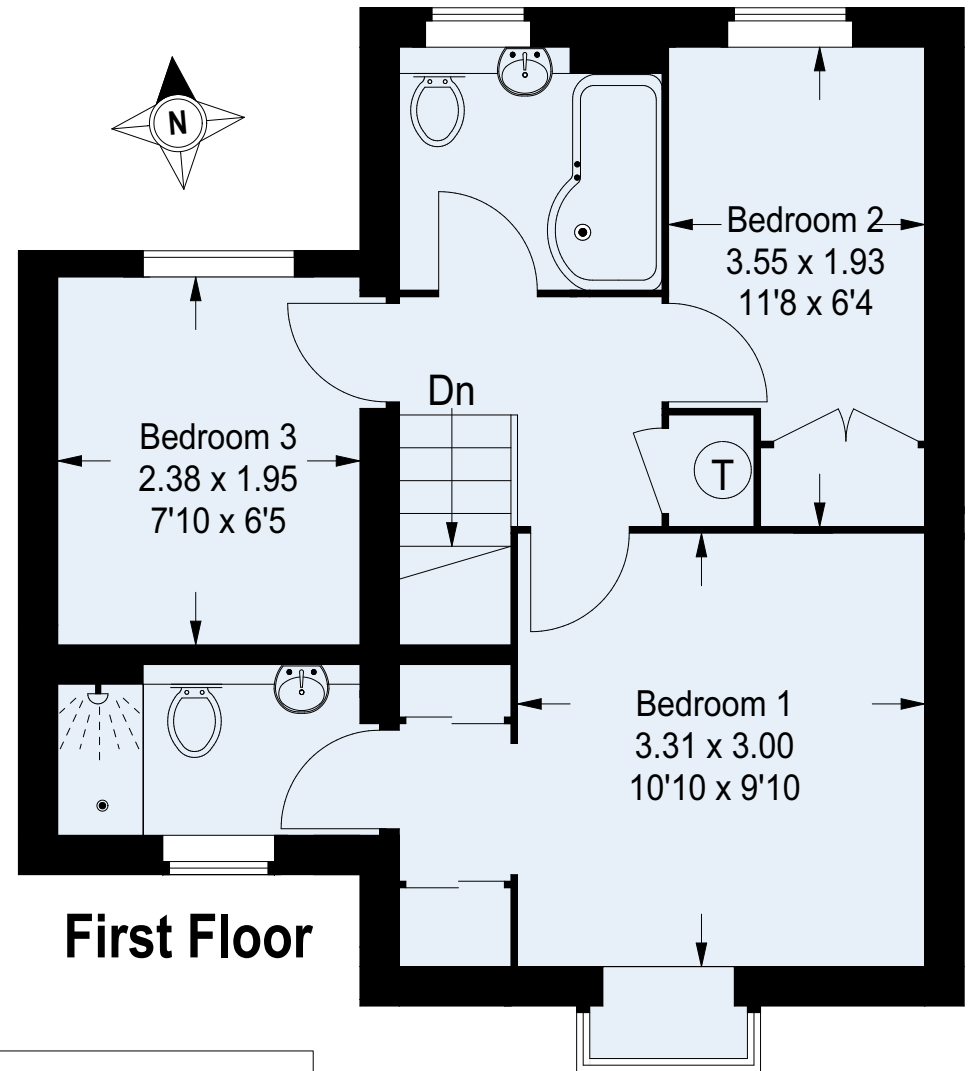
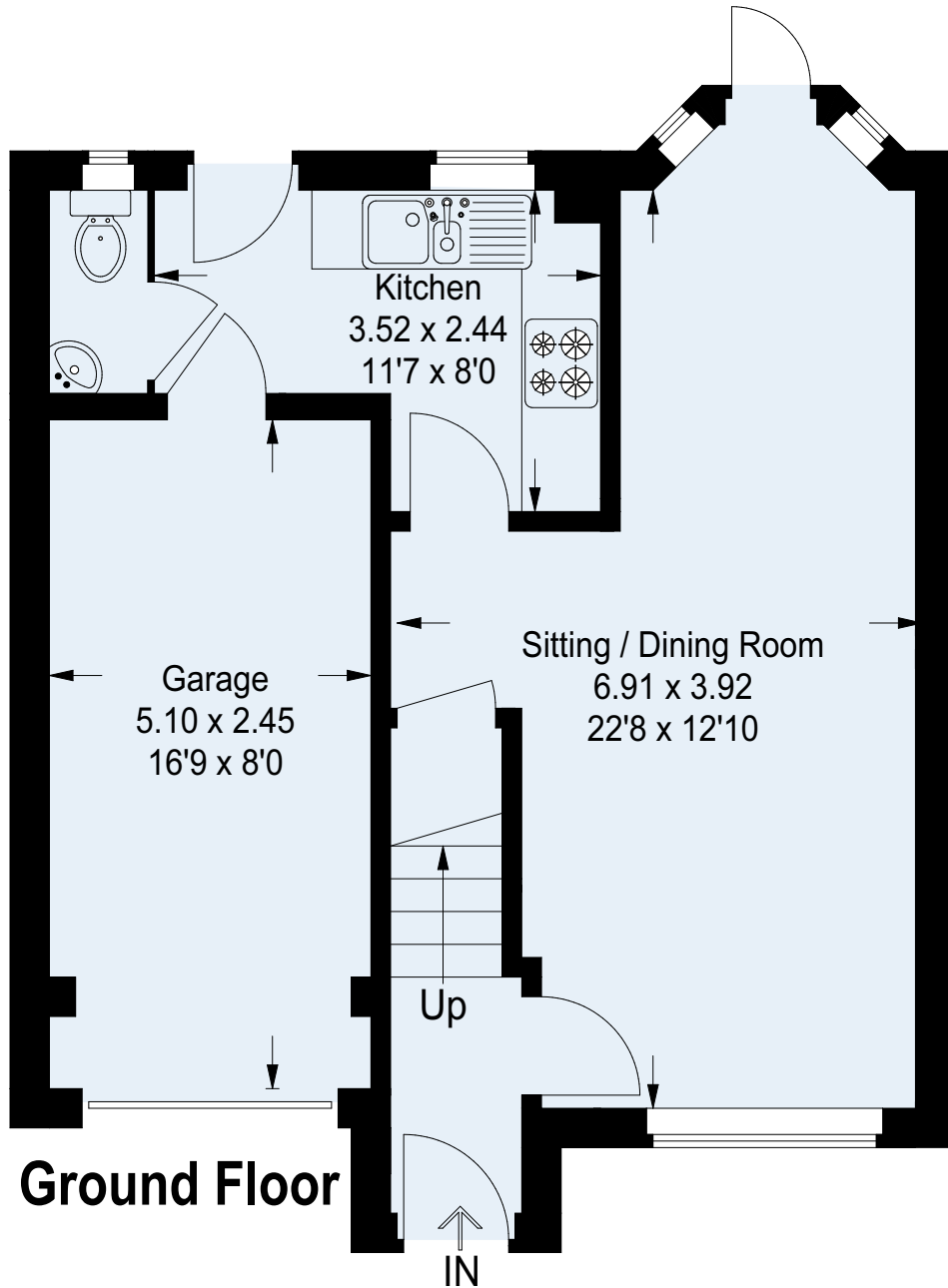


# Scholars Walk, Guildford



This plan is for representation purposes only as defined by the RICS Code of Measuring Practice. Not drawn to scale unless stated. Please check all dimensions before making any decisions reliant upon them. No guarantee is given on square footage if quoted. Any figures if quoted should not be used as a basis for valuation.

Approximate Gross Internal Area  
Ground Floor (Including Garage)  
= 47.7 sq m / 513 sq ft  
First Floor = 39 sq m / 420 sq ft  
Total = 86.7 sq m / 933 sq ft