

Howard Morley
& Sons



PCM

£6,000 PCM

Abbotswood

Guildford, GU1 1UZ

PROPERTY SUMMARY

Located on the exclusive Abbotswood Estate, this six bedroom detached family house is presented in fantastic condition.

6



4



4



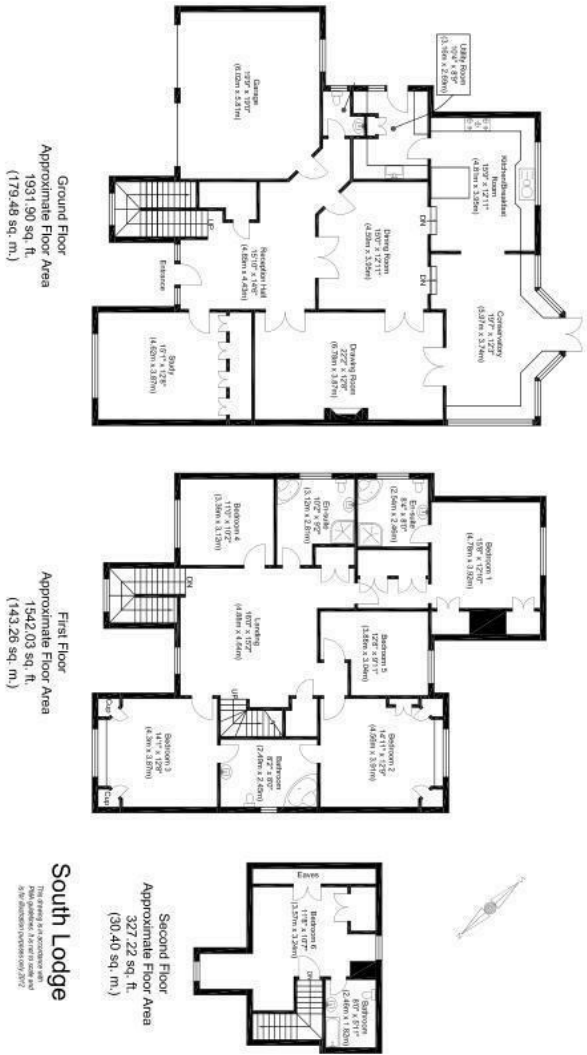


LOCAL AUTHORITY
 Guildford Borough Council

TENURE

COUNCIL TAX BAND

VIEWINGS
 By prior appointment only



Energy Efficiency Rating		Current	Potential
Very energy efficient - lower running costs			
(92 plus) A			
(81-91) B			
(69-80) C			
(55-68) D		68	73
(39-54) E			
(21-38) F			
(1-20) G			
Not energy efficient - higher running costs			
England & Wales		EU Directive 2002/91/EC	

Agents Note: Whilst every care has been taken to prepare these particulars, they are for guidance purposes only. All measurements are approximate and are for general guidance purposes only and whilst every care has been taken to ensure their accuracy, they should not be relied upon and potential buyers/tenants are advised to recheck the measurements

**Howard Morley
 & Sons**

OFFICE ADDRESS
 276 High Street
 Guildford
 Surrey
 GU1 3JL

OFFICE DETAILS
 01483 575 304
 lettings@hmorley.co.uk
 hmorley.co.uk