

Howard Morley  
& Sons



PER MONTH

**£3,500 Per Month**

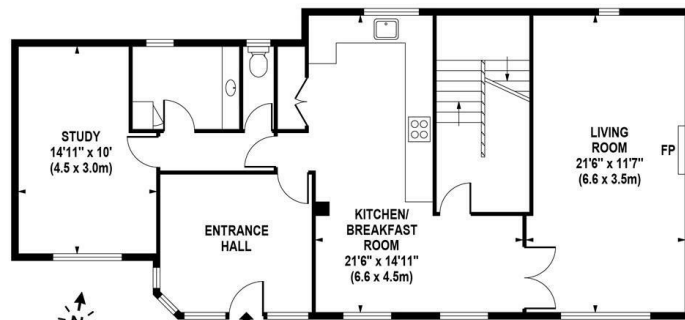
**Little London**

Guildford, GU5 9DG





FIRST FLOOR



GROUND FLOOR

APPROX. GROSS INTERNAL FLOOR AREA 1659 SQ FT / 154 SQ M

Whilst every attempt has been made to ensure the accuracy of the floorplan contained here, measurements of doors, windows and rooms are approximate and no responsibility is taken for any error omission or mis-statement. These plans are for representation purposes only and should be used as such by any prospective purchaser / tenant. The services, systems and appliances listed in this specification have not been tested and no guarantee as to their operating ability or their efficiency can be given

© www.skyshtglobal.com

3	
2	
2	

Energy Efficiency Rating		Current	Potential
Very energy efficient - lower running costs			
(92 plus)	A		84
(81-91)	B		
(69-80)	C		
(55-68)	D		
(39-54)	E	40	
(21-38)	F		
(1-20)	G		
Not energy efficient - higher running costs			
England & Wales		EU Directive 2002/91/EC	

Agents Note: Whilst every care has been taken to prepare these particulars, they are for guidance purposes only. All measurements are approximate and are for general guidance purposes only and whilst every care has been taken to ensure their accuracy, they should not be relied upon and potential buyers/tenants are advised to recheck the measurements

	<b>OFFICE ADDRESS</b> 276 High Street Guildford Surrey GU1 3JL	<b>OFFICE DETAILS</b> 01483 575 304 lettings@hmorley.co.uk hmorley.co.uk
--	--	---