



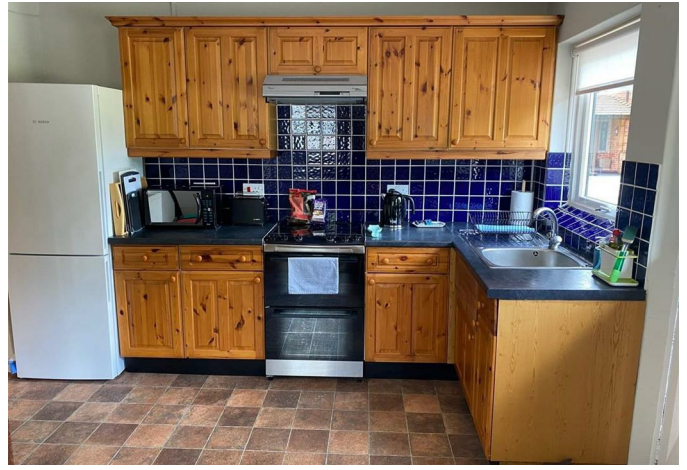
Howard Morley
& Sons

PER MONTH

£1,400 Per Month

Turtles Farm

Alfold, GU6 8EY



Approximate Gross Internal Floor Area 732 sq. ft / 67.97 sq. m

This plan is for layout guidance only. Not drawn to scale unless stated. Whilst every care is taken in the preparation of this plan, please check all dimensions, shapes and compass bearings before making decisions reliant upon them.

2	
2	
1	

Energy Efficiency Rating		Current	Potential
Very energy efficient - lower running costs			
(92 plus)	A		
(81-91)	B		
(69-80)	C		68
(55-68)	D		
(39-54)	E	49	
(21-38)	F		
(1-20)	G		
Not energy efficient - higher running costs			
England & Wales		EU Directive 2002/91/EC	

Agents Note: Whilst every care has been taken to prepare these particulars, they are for guidance purposes only. All measurements are approximate and are for general guidance purposes only and whilst every care has been taken to ensure their accuracy, they should not be relied upon and potential buyers/tenants are advised to recheck the measurements

Howard Morley & Sons

OFFICE ADDRESS
1 Kent House
81 High Street
Cranleigh
Surrey

OFFICE DETAILS
01483 267181
lettings@hmorley.co.uk
hmorley.co.uk