



Howard Morley
& Sons

PER MONTH

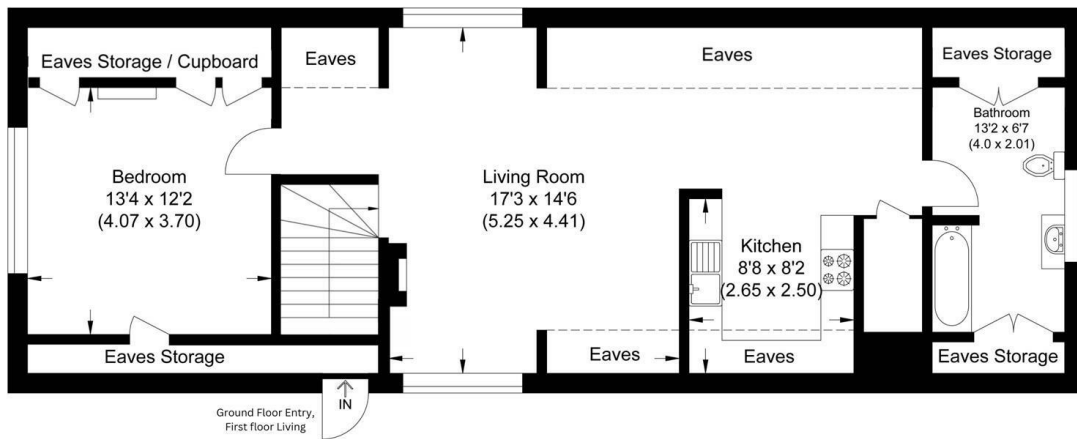
£1,250 Per Month

Tilthams Farm

Godalming, GU7 3DE



Approximate Gross Internal Area
74.43 sq m / 801.15 sq ft
(Excludes Eaves Storage)



First Floor

Illustration for identification purposes only, measurements are approximate, not to scale.

1 |

1 |

1 |

Energy Efficiency Rating		Current	Potential
Very energy efficient - lower running costs			
(92 plus) A			
(81-91) B			
(69-80) C			
(55-68) D		59	61
(39-54) E			
(21-38) F			
(1-20) G			
Not energy efficient - higher running costs			
England & Wales		EU Directive 2002/91/EC	

Agents Note: Whilst every care has been taken to prepare these particulars, they are for guidance purposes only. All measurements are approximate and are for general guidance purposes only and whilst every care has been taken to ensure their accuracy, they should not be relied upon and potential buyers/tenants are advised to recheck the measurements

Howard Morley
& Sons

OFFICE ADDRESS
276 High Street
Guildford
Surrey
GU1 3JL

OFFICE DETAILS
01483 575 304
lettings@hmorley.co.uk
hmorley.co.uk